

# CANCELLED

# ACCESSORY

AK177-47  
OCTOBER 18, 1969

# Kit

**Title** NAVIGATION LIGHT DETECTOR

MODELS AFFECTED

177

SERIALS AFFECTED

17701371 & on

Cessna.

**PARTS LIST:**

QUANTITY	PART NUMBER	NOMENCLATURE
1	1221201-3	Detector
1	1221201-4	Detector
1 pt	EC-1300L	Cement
1		Installation Instructions

CHANGE IN WEIGHT AND BALANCE: NEGLIGIBLE

**1. DESCRIPTION OF INSTALLATION.**

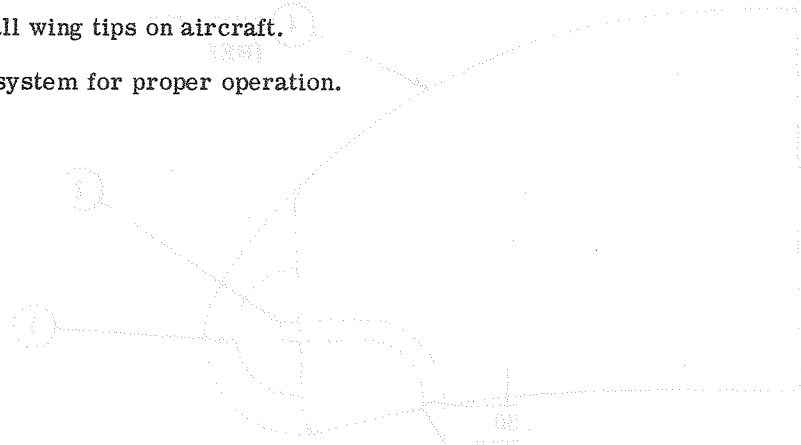
a. Installation of this kit consists of:

- (1) Installing navigation light detectors in the wing tips.

**2. INSTALLATION INSTRUCTIONS.**

a. (Refer to figure 1.) Navigation Light Detector Installation.

- (1) Remove both wing tips (4).
- (2) Layout and drill holes (3) as shown in view A-A.
- (3) Install detectors (2) and secure with cement.
- (4) Reinstall wing tips on aircraft.
- (5) Check system for proper operation.



VIEW A-A

**CANCELLED**

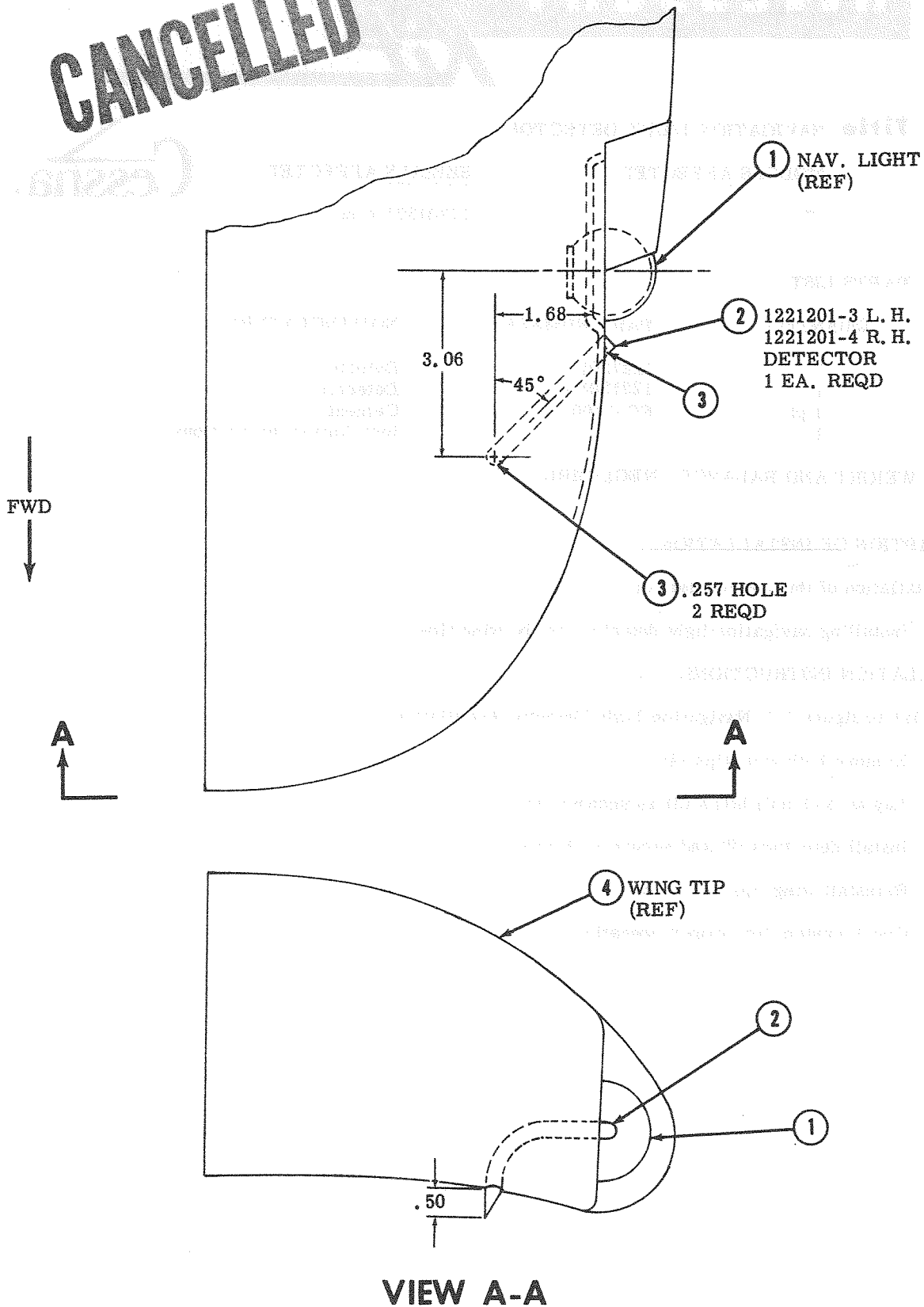


Figure 1. Nav-Light Detector Installation.